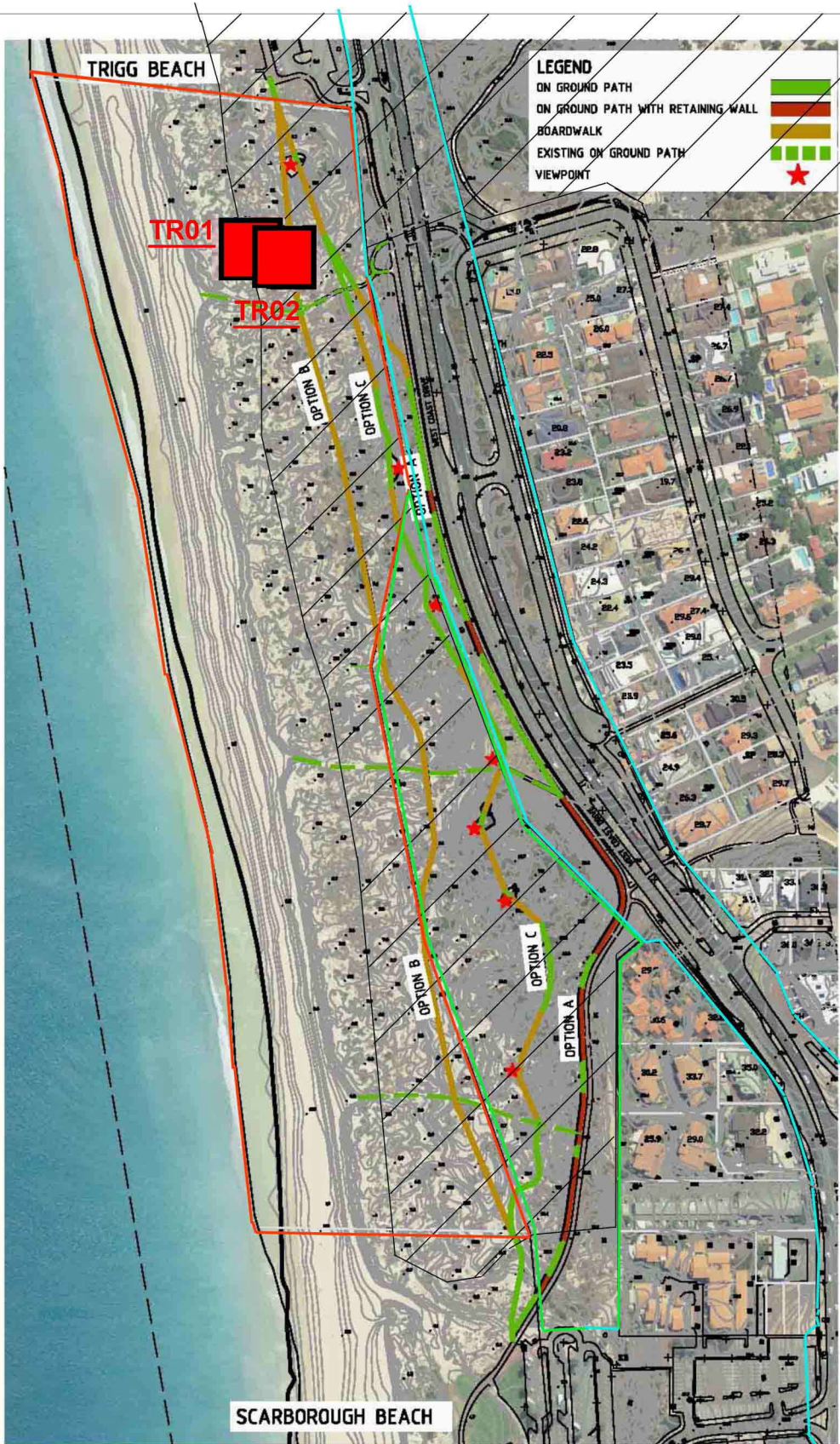


Attachment 3 - A4 concept plan (low resolution) showing the three (3) options



Area bounded in red: South Trigg Reserve, A Class Reserve

Area bounded in green: Esplanade Reserve, pending amalgamation with South Trigg Reserve as per Council resolution of 1/5/12, formerly Road Reserve

Area bounded in blue: Shown as 'Primary Regional Road' - presumably road reserve

Area with diagonal stripe - Bush Forever designated land.

Bush Forever flora survey conducted by botanist EA Griffin:

■ TR01: PRISTINE

■ TR02: GOOD